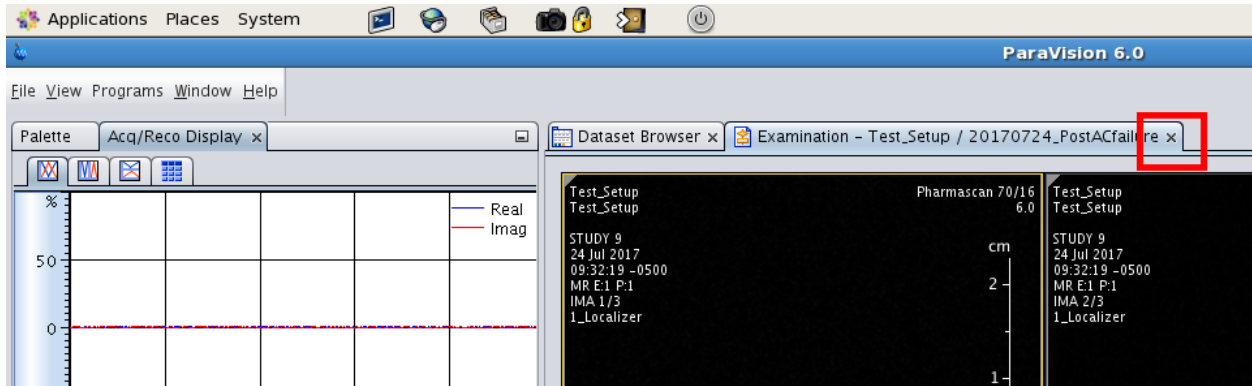
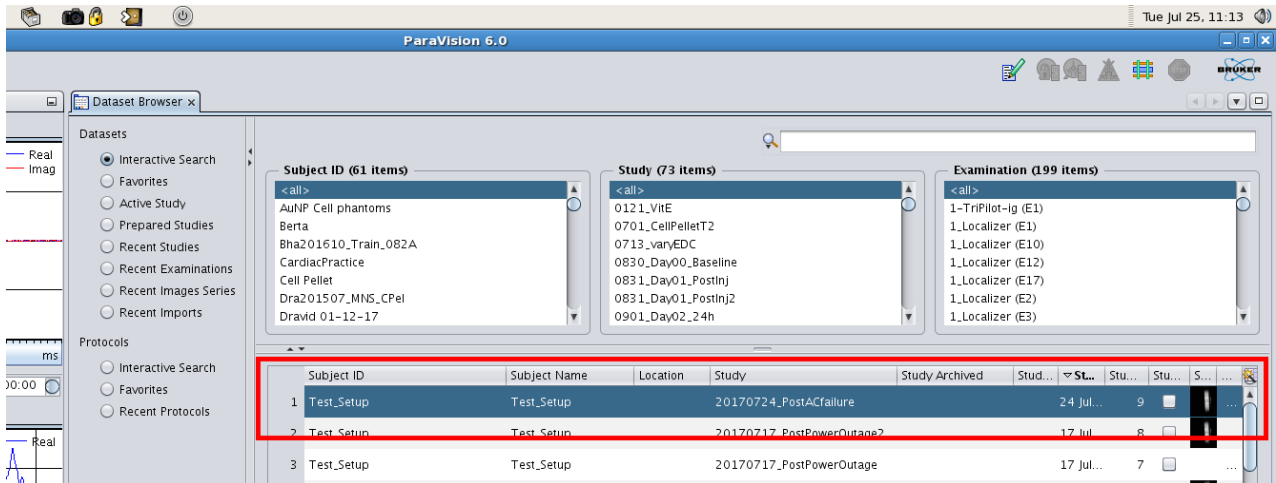


# Exporting data from the 7T MRI

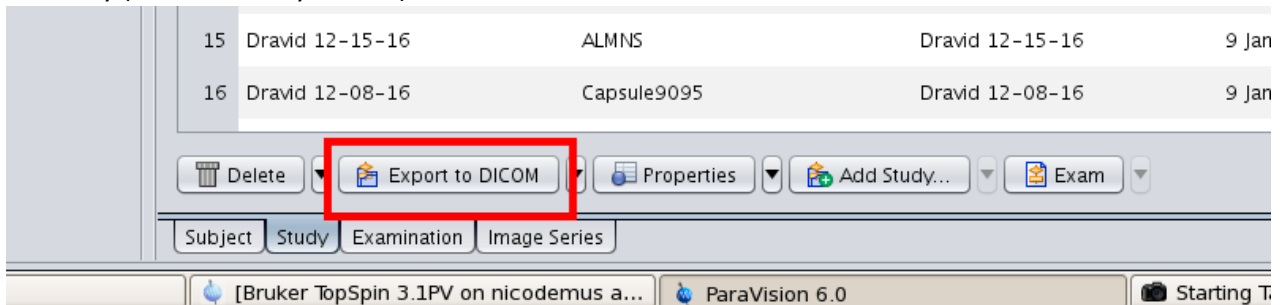
1. Close the Exam Card.

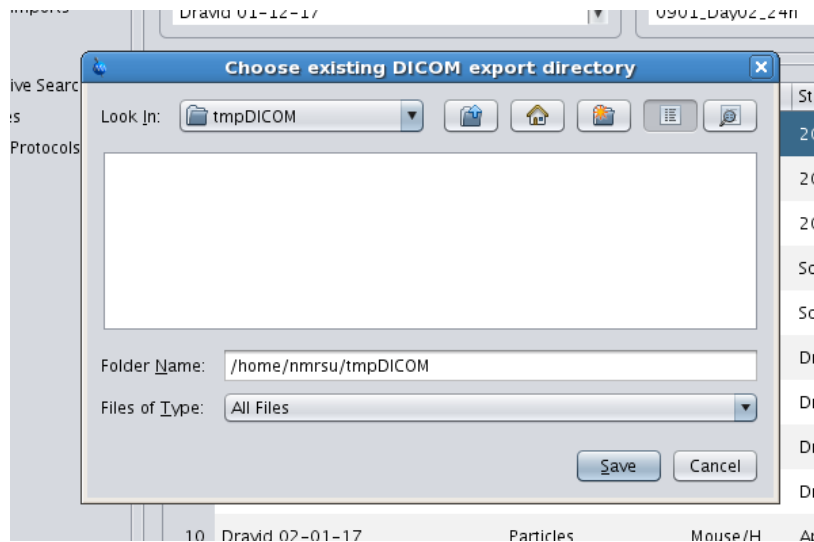


2. Locate and select study in Data Browser window.

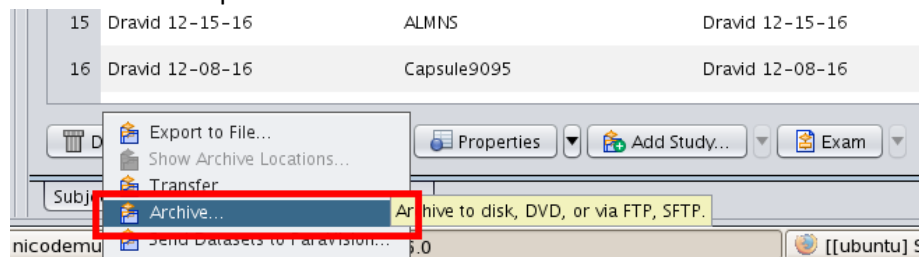


3. Export the study to DICOM: Click "Export to DICOM" button and save your DICOMs into the tmpDICOM directory (it's selected by default).

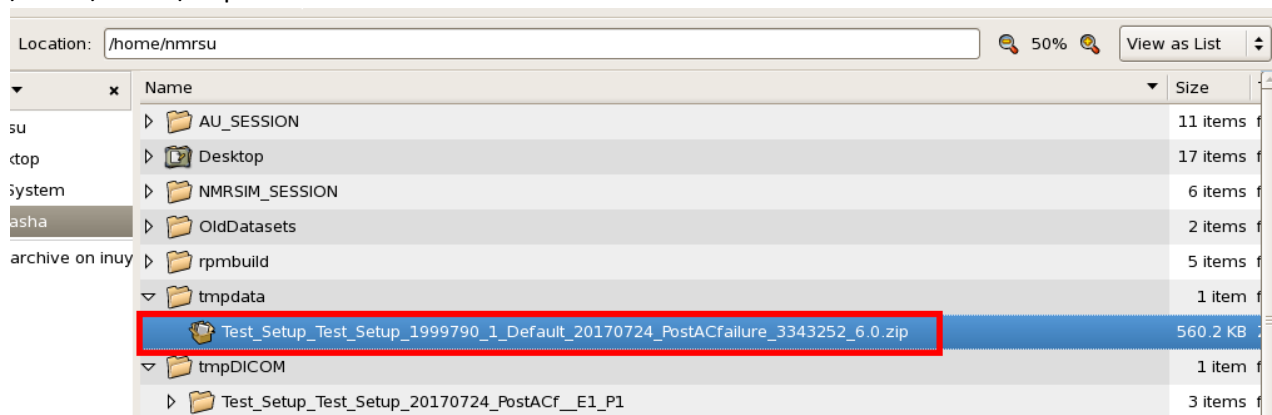




4. Create raw data archive: Select “Archive” from the pop up menu that appears when you click the dropdown arrow next to “Export to DICOM.”

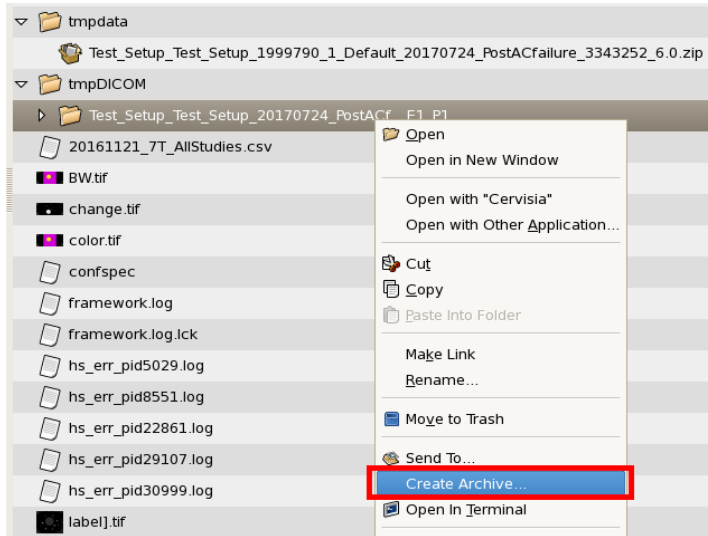


5. Go to computer’s file browser and find your exported data in the /home/nmrsu/tmpdata and /home/nmrsu/tmpDICOM directories.



6. Change the extension on the exported data from .PvDatasets to .zip

7. Right click on the folder containing your DICOM files and zip it (or use other archive such as .tar.gz)



8. Open a web browser and log into box.northwestern.edu. Drag and drop upload does not work on this machine. Use the file upload tool.

